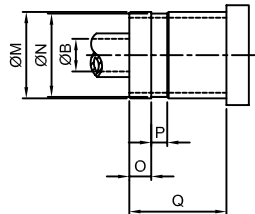
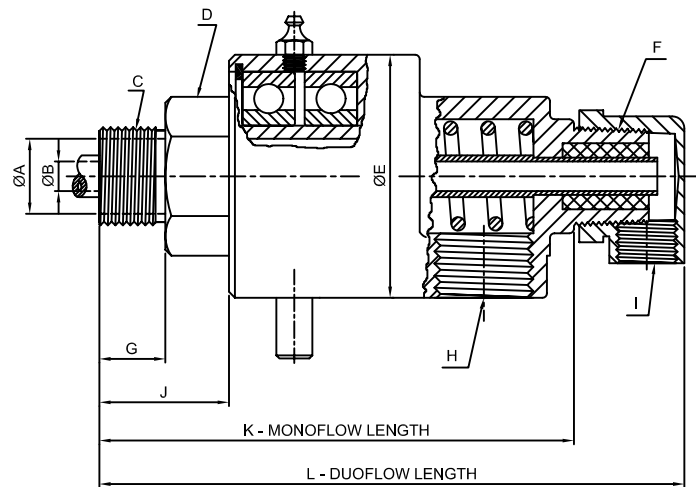


MOUNTING
ARRANGEMENT



QUICK CONNECTION
ROTOR DETAIL



R - 100 ROTARY UNION

Double ball bearings, balanced face sealing, lapped to optical, flatness, secondary sealing of Nitrile, Viton, PTFE.
Available in MONO FLOW, DOU FLOW With Fixed siphon ang rotating siphon.

OPERATING DATA :-

Max. RPM. - 1500

Max. Temperature - 160° C

Max. Pressure - 35 Kg./ Cm^2 .

MIDIA - Water